

THE IGU-AGLE COMMISSION/TASK FORCE REPORT 2021

A. Membership

Following are the details of the IGU-AGLE steering committee members, please find below my details:

Yansui Liu,
Chair,
Professor, TWAS Fellow
Institute of Geographic Sciences and Natural Resources Research
Chinese Academy of Sciences, China

Guy M Robinson
Joint chair, Treasurer
Professor, School of Social Sciences
University of Adelaide, Australia

Yuheng Li
Secretary,
Associate Professor,
Institute of Geographic Sciences and Natural Resources Research
Chinese Academy of Sciences, China

Coline Perrin
Professor
French National Institute for Agricultural Research (INRA), France

Michael Woods
Professor
Department of Geography and Earth Sciences
Aberystwyth University, UK

Hans Westlund
Professor
School of Architecture and Built Environment
Royal Institute of Technology (KTH), Sweden

Bob Nanes
Executive director
Massachusetts Institute of Technology, USA

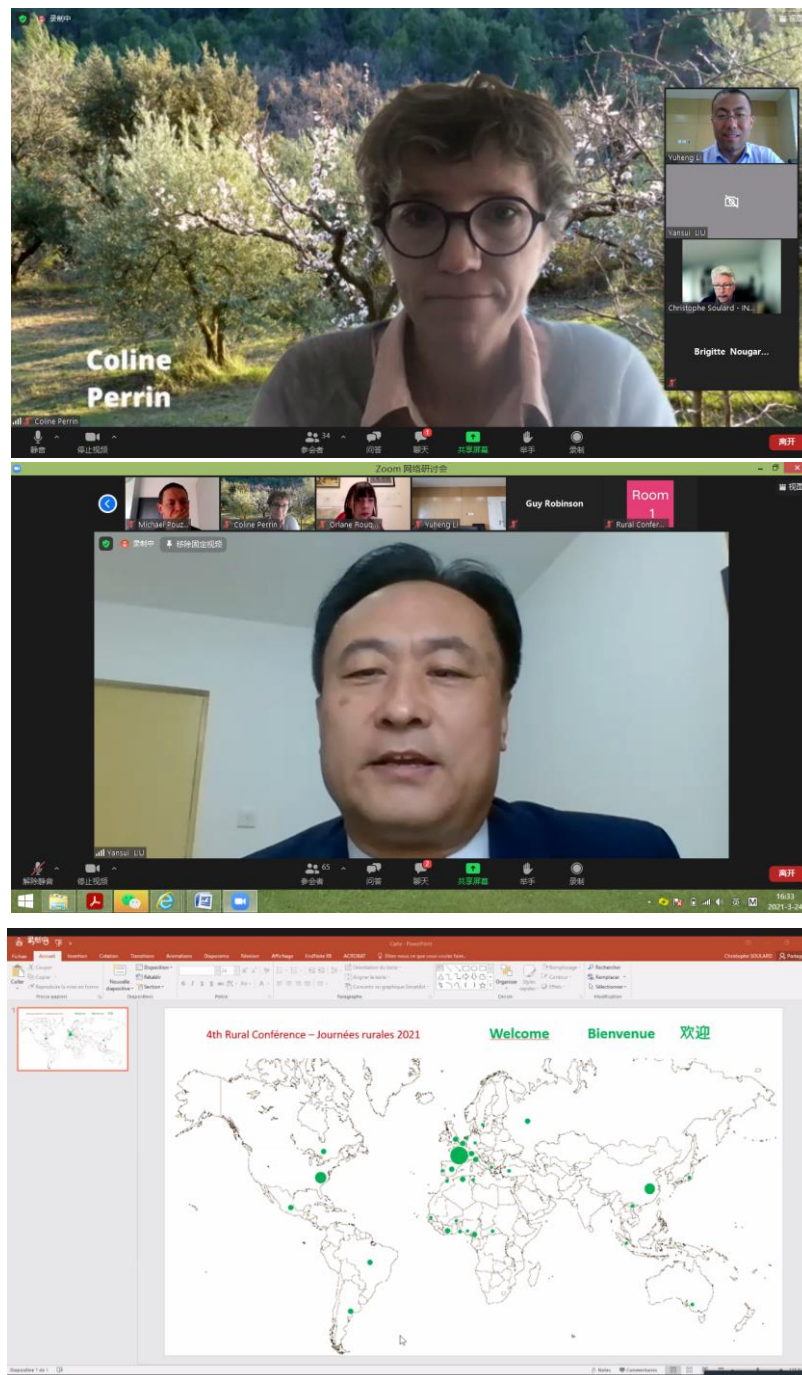
Rajendra P. Shrestha
Professor
School of Environment Resources and Development
Asian Institute of Technology (AIT), Thailand

Habibullah Magsi
Associate Professor of Agricultural Economics
Sindh Agriculture University Tandojam, Pakistan
Tel: +92 342 2479265
E-mail: hmagsi@sau.edu.pk

B. Meetings

a. The Fourth International Conference of the International Geographical Union (IGU) Commission on Agricultural Geography and Land Engineering (AGLE) was held online (planned to be held in Montpellier, France), March 24-26, 2021. Over 100 Scholars from 25 different countries participated in this conference.

The conference theme is “Thinking Urban-Rural interactions through Food and Land Uses issues” which focuses on the analysis of urban-rural interactions by way of food and land issues.



b. IGU-AGLE organizes the session at the Paris IGC in July 2022

Professor Guy, Liu and Li successfully applied for the session, which already puts the IGU Paris 2022 Centennial Congress on the road to success.

Title of the session: Global Sustainable Agriculture and Land Management Systems

Reference of the submission: A101334GR

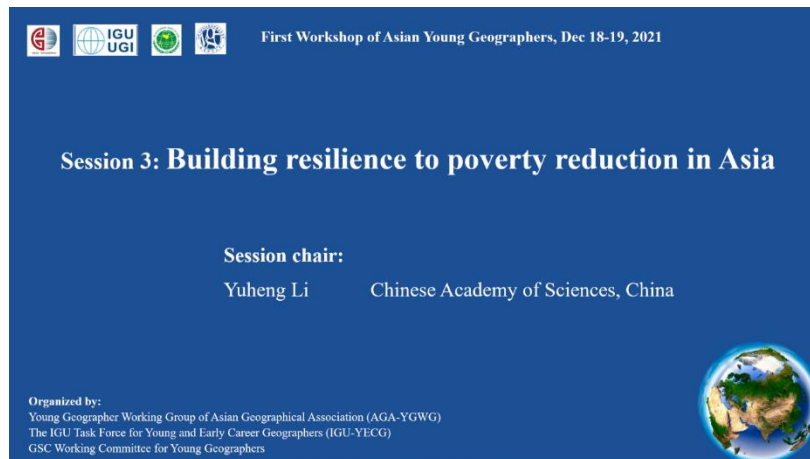
C. Networking

a. The IGU-AGLE chair Yansui Liu and his team visited Yang county, south Shaanxi Province, Dec. 4-5, 2021. There they communicated with local governments and reached an agreement to jointly establish a demonstration base of modern agriculture and rural revitalization at Young county. Besides, the Fifth International Conference of the International Geographical Union (IGU) Commission on Agricultural Geography and Land Engineering (AGLE) is planned to be held in Yang county in 2022.



Field visit to IGU-AGLE research base at Yang county

b. The IGU-AGLE executive member Yuheng Li was invited to organize and chair a session with the topic “Building resilience to poverty reduction in Asia” which lists in the First Workshop of Asian Young Geographers, Dec. 18-19, 2021. The organizers include Young Geographer Working Group of Asian Geographical Association (AGA-YGWG), The IGU Task Force for Young and Early Career Geographers (IGU-YECG) and Working Committee for Young Geographers at The Geographical Society of China (GSC)



D. Publications

- a. The IGU-AGLE chair, Yansui Liu published a book entitled “*Urban-Rural Transformation Geography*” at Springer Nature: Sustainable Development Goals Series (2021)
- b. Yansui Liu edited a book entitled “*Typical Experience and Model of Poverty Alleviation in China* ”at People's Publishing House(2021)

E. Archival Contributions

- a. IGU-AGLE contributes two pieces news to the IGU Newsletters.

- Other IGU recent books

Urban-Rural Transformation Geography

This information appears in the IGU Newsletter October 2021

[IGU-UGI-e-Newsletter-October-2021.pdf](#)

- AWARDS

2020 Prize for Science and Technology of Land and Resources (China)

On October 5, 2021, the “Research on key technologies of comprehensive land consolidation in poverty-stricken areas around Beijing-Tianjin and its application in targeted poverty alleviation” hosted by Professor Yansui Liu, the Chairman of the IGU Commission Agriculture Geography and Land Engineering Commission of the International Geographical Union (IGU-AGLE) and the Fellow of The World Academy of Sciences (TWAS), was awarded the first prize of 2020 Prize for Science and Technology of Land and Resources of the Ministry of Natural Resources of the People’s Republic of China.

This information appears in the IGU newsletter October 2021

[IGU-UGI-e-Newsletter-October-2021.pdf](#)